

Machining Center into



Deburring Special Machine

Model DBR7-P

Transform



Feature 1

The processing axis compresses (or extends).
It also inclines and fits 3D curves.

Feature 2

It can process both the surface and the reverse side.
(model with tension)

Feature 3

Spring constant for inclination is changeable based
on work materials.

For deburring of cast metal and aluminium diecast.

No need to use robots or special machines. Model DBR can be used with the
current MC that you use for other processes.

Examples of process: Engine parts, hydraulic units, tool beds of machine tools etc.

The edge of tool inclines 5°
and rotates 360°



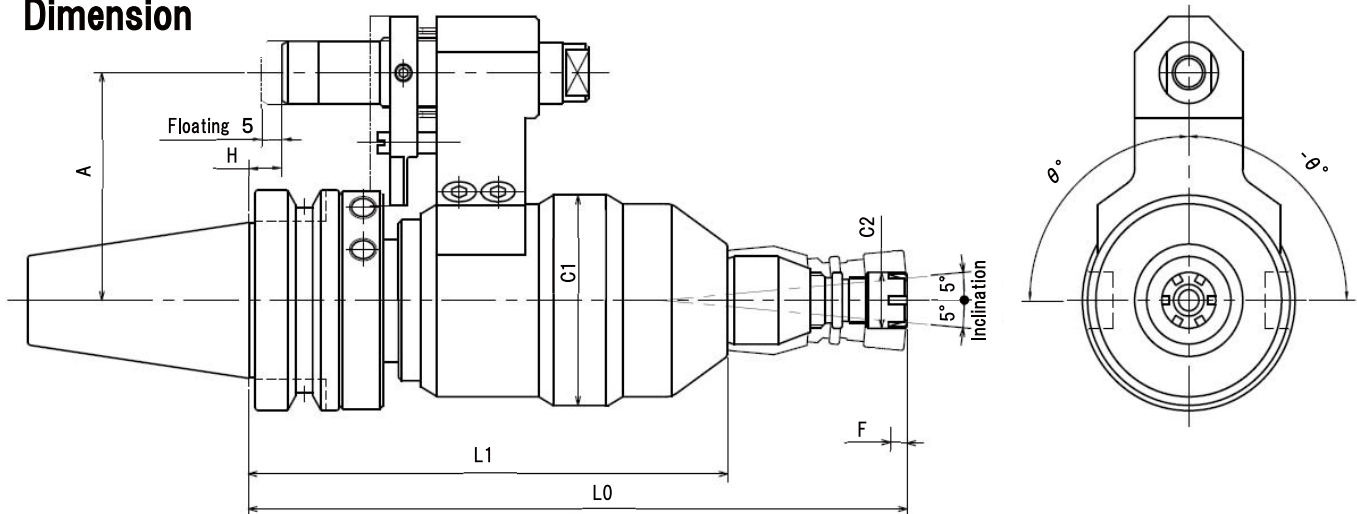
Specification

- Maximum rotation : 15000 min-1
- Maximum diameter of tool shank : $\phi 7$ (ER11)
- Angle of inclination : $\pm 5^\circ$
- Setting of spring : 3 standard types
(other settings by order)
- Floating : 5mm (compression or tension)
- Shank : BT30, 40, 50, HSK-A63
- Coolant : Dry process
Air blow is possible
- Cutting tool : Grindstone with arbor
Rubber grindstone
Carbide rotary bur
Cutting fiber etc.



After processing (right side of the tool)

Dimension



Unit : mm

Model	L0	L1	C1	C2	F	A	H(Adjustable)	Weight(Kg)
BT30-DBR7-P	185	132	60	16	5	55	-16~32	2.2
BT40-DBR7-P	195	142				65	-20~28	2.8
BT50-DBR7-P	205	152				80	-10~38	5.7
HSKA63-H-DBR7-P	220	167				65	5~37	2.9

KATO MFG.CO.,LTD.

2-65, Shinmachi, Hiratsuka, Kanagawa, JAPAN

TEL: +81-463-36-1511

<http://kato-koki.com/eng/>