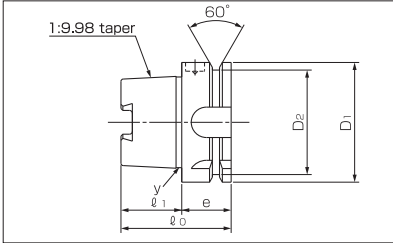


생크 규격 Shank Standards

HSK shank : ISO 12164-1, DIN 69893-1, JIS B 6064-1

unit:mm

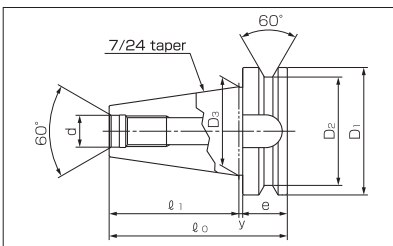


| shank no. | l_0 | l_1 | e | y | D1 | D2 |
|-----------|-------|-------|----|-----|-----|----|
| HSK-A- 63 | 58 | 32 | 26 | 2.5 | 63 | 55 |
| HSK-A-100 | 79 | 50 | 29 | 2.5 | 100 | 92 |

※수동클램프 구멍이 있는 HSK생크는 특별 주문품입니다.
 ※HSK shank with holes for manual clamping is available as a special order.

BT shank : ISO 7388-2, JIS B 6339

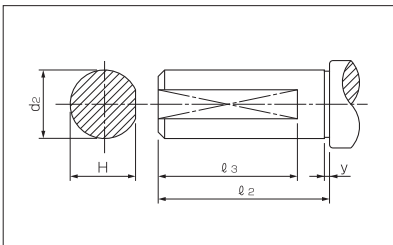
unit:mm



| shank no. | l_0 | l_1 | e | y | D1 | D2 | D3 | d | thread |
|-----------|-------|-------|----|---|-----|-----|--------|------|----------|
| BT30 | 70.4 | 48.4 | 20 | 2 | 46 | 38 | 31.75 | 12.5 | M12x1.75 |
| BT35 | 80.4 | 56.4 | 22 | 2 | 53 | 43 | 38.10 | 12.5 | M12x1.75 |
| BT40 | 92.4 | 65.4 | 25 | 2 | 63 | 53 | 44.45 | 17.0 | M16x2.0 |
| BT45 | 115.8 | 82.8 | 30 | 3 | 85 | 73 | 57.15 | 21.0 | M20x2.5 |
| BT50 | 139.8 | 101.8 | 35 | 3 | 100 | 85 | 69.85 | 25.0 | M24x3.0 |
| BT55 | 169.8 | 126.8 | 40 | 3 | 120 | 107 | 88.90 | 31.0 | M30x3.5 |
| BT60 | 209.8 | 161.8 | 45 | 3 | 155 | 135 | 107.95 | 31.0 | M30x3.5 |

STT shank : Flatted cylindrical parallel shank for CNC lathes

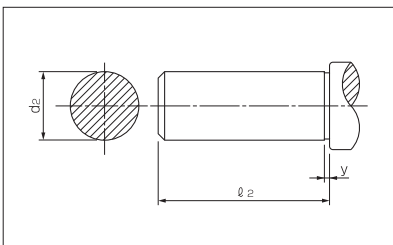
unit:mm



| shank no. | l_0 | l_1 | y | d2 | H |
|-----------|-------|-------|---|----|------|
| STT25 | 75 | 70 | 3 | 25 | 24.0 |
| STT32 | 80 | 75 | 3 | 32 | 30.5 |
| STT40 | 80 | 75 | 3 | 40 | 38.5 |
| STT42 | 80 | 75 | 3 | 42 | 40.5 |
| STT50 | 90 | 85 | 3 | 50 | 47.5 |

ST shank : Cylindrical parallel shank for CNC lathes

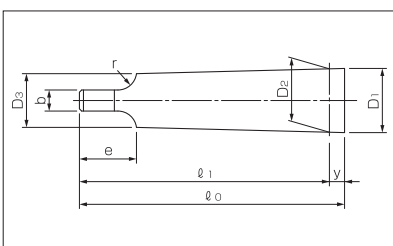
unit:mm



| shank no. | l_0 | y | d2 |
|-----------|-------|---|----|
| ST25 | 75 | 3 | 25 |
| ST32 | 80 | 3 | 32 |
| ST40 | 80 | 3 | 40 |
| ST42 | 80 | 3 | 42 |
| ST50 | 90 | 3 | 45 |

Morse taper shank : ISO 296, DIN 228, JIS B 4003

unit:mm



| shank no. | l_0 | l_1 | y | D1 | D2 | D3 | r | e | b |
|-----------|-------|-------|-----|------|--------|------|----|------|------|
| MT0 | 59.5 | 56.5 | 3.0 | 9.2 | 9.045 | 6.1 | 4 | 10.5 | 3.9 |
| MT1 | 65.5 | 62.0 | 3.5 | 12.2 | 12.065 | 9.0 | 5 | 13.5 | 5.2 |
| MT2 | 80.0 | 75.0 | 5.0 | 18.0 | 17.780 | 14.0 | 6 | 16.0 | 6.3 |
| MT3 | 99.0 | 94.0 | 5.0 | 24.1 | 23.825 | 19.1 | 7 | 20.0 | 7.9 |
| MT4 | 124.0 | 117.5 | 6.5 | 31.6 | 31.267 | 25.2 | 8 | 24.0 | 11.9 |
| MT5 | 156.0 | 149.5 | 6.5 | 44.7 | 44.399 | 36.5 | 10 | 29.0 | 15.9 |
| MT6 | 218.0 | 210.0 | 8.0 | 63.8 | 63.348 | 52.4 | 13 | 40.0 | 19.0 |